

See discussions, stats, and author profiles for this publication at: <https://www.researchgate.net/publication/347840666>

A Hybrid Automated Intelligent COVID-19 Classification System Based on Neutrosophic Logic and Machine Learning Techniques Using Chest X-Ray Images

Chapter · December 2020

DOI: 10.1007/978-3-030-77302-1_7

CITATIONS

0

READS

28

4 authors:



A. A. Salama

Port Said University

227 PUBLICATIONS 3,253 CITATIONS

[SEE PROFILE](#)



Ibrahim Yasser

Faculty of Engineering Mansoura University & Nile Higher Institute for Engineering...

9 PUBLICATIONS 28 CITATIONS

[SEE PROFILE](#)



Abeer Twakol Khalil

5 PUBLICATIONS 8 CITATIONS

[SEE PROFILE](#)



A. A Abd El-Khalek

Nile Higher institute for Engineering and Technology

4 PUBLICATIONS 11 CITATIONS

[SEE PROFILE](#)

Some of the authors of this publication are also working on these related projects:



Neutrosophic Correlation [View project](#)



New Trends in Neutrosophic Theory and Applications [View project](#)

A Hybrid Automated Intelligent COVID-19 Classification System Based on Neutrosophic Logic and Machine Learning Techniques Using Chest X-Ray Images

Advances in Data Science and Intelligent Data Communication Technologies for COVID-19 pp 119-137 | Cite as

- Ibrahim Yasser (1) Email author (Ibrahim_yasser@mans.edu.eg)
- Aya A. Abd El-Khalek (2)
- Abeer Twakol (3)
- Mohy-Eldin Abo-Elsoud (4)
- Ahmed A. Salama (5)
- Fahmi Khalifa (4)

1. Engineering Faculty, University of Mansoura, , Mansoura, Egypt

2. Communications and Electronics Engineering Department, Nile Higher Institute for Engineering and Technology, , Mansoura, Egypt

3. Computer Engineering Department, Engineering Faculty, Benha University, , Banha, Egypt

4. Electronics and Communications Engineering Department, Engineering Faculty, Mansoura, Egypt

5. Science Department, Faculty of Sciences, University of

View PDF

Chapter

First Online: 24 July 2021

Part of the Studies in Systems, Decision and Control book series (SSDC, volume 378)

Abstract

To facilitate timely treatment and management of COVID-19 patients, efficient and quick identification of COVID-19 patients is of immense importance during the COVID-19 crisis. Technological developments in machine learning (ML) methods, edge computing, computer-aided medical diagnostic been utilized for COVID-19 Classification. This is mainly because of their ability to deal with *Big data* and their inherent robustness and ability to provide distinct output characteristics attributed to the underlying application. The contrary transcription-polymerase chain reaction is currently the clinical typical for COVID-19 diagnosis. Besides being expensive, it has low sensitivity and requires expert medical personnel. Compared with RT-PCR, chest X-rays are easily accessible with highly available annotated datasets and can be utilized as an ascendant alternative in

COVID-19 diagnosis. Using X-rays, ML methods can be employed to identify COVID-19 patients by quantitatively examining chest X-rays effectively. Therefore, we introduce an alternative, robust, and intelligent diagnostic tool for automatically detecting COVID-19 utilizing available resources from digital chest X-rays. Our technique is a hybrid framework that is based on the fusion of two techniques, Neutrosophic techniques (NTs) and ML. Classification features are extracted from X-ray images using morphological features (MFs) and principal component analysis (PCA). The ML networks were trained to classify the chest X-rays into two classes: positive (+ve) COVID-19 patients or normal subjects (or -ve). The experimental results are performed based on a sample from a collected comprehensive image dataset from several hospitals worldwide. The classification accuracy, precision, sensitivity, specificity and F1-score for the proposed scheme was 98.46%, 98.19%, 98.18%, 98.67%, and 98.17%. The experimental results also documented the high accuracy of the proposed pipeline compared to other literature techniques.

Keywords

COVID-19 Artificial intelligence Machine learning Neutrosophic techniques
Computer-aided diagnostic tool

Access to this content is enabled by **Egyptian Knowledge Bank**

[Download](#) chapter PDF

1 Introduction

Coronavirus Disease-2019 (COVID-19) caused by the so-called severe acute respiratory syndrome coronavirus 2 (SARS-CoV-2) is a devastating worldwide epidemic. In March 2020, the World Health Organization (WHO) announced that SARS-CoV-2 (or COVID-19) has become a global public health crisis. SARS-CoV-2 is known for its high transmutability and pathogenicity. Many research laboratories worldwide are working on developing a clinical antiviral drug and/or vaccine to help control the spread of the virus. Governments in various countries have implemented flight restrictions and limits on the border crossing. Also, public awareness of hygiene and social distancing has been imposed. However, the virus continues to unfold at a rapid pace. While the general population encountered mild to severe respiratory disease with COVID-19, others have had fatal pneumonia [1]. Several analysis within medicine, clinical, and computing are failing to organize proactive plans of action for COVID-19 with established research goals. As this illness is very infectious, the foremost fascinating interference technique is to spot infected patients to contain the spread; therefore, the transmission chain is interrupted [2]. Medical screening tool that is currently in use for COVID-19 diagnosis is RT-PCR, which stands for reverse transcription enzyme chain reaction. RT-PCR is complex manually employed, and it is also time consuming. Furthermore, it only has a rate of positivity 63%. Additionally, the swab take a look at involves separation for the test protocol, whereas chest X-ray detection is simply managed [3]. In addition, there's a severe lack of supplies, that results in an interruption in tries to eradicate disease [4]. Delays in take a look at results will result in infected patients communication with and infecting healthy patients within the process. The other diagnostic approaches of COVID-

View PDF

19 embrace the study of medical specialty signs, epidemiologic histories and positive pradiographic images [computed tomography (CT)/chest radiography (CXR)] also as positive morbidic checks. The majority of COVID-19 cases have similar decisions for X-ray imaging, together with longitudinal, multifocal, ground-glass natural process with peripheral or point distribution, chiefly within the lower lobes of the earlying process and late stage respiratory organ consolidation [5]. Although CT chest may be a lot of economical imaging procedure for lung-related dis-ease diagnosis, CXR is favored as a result of its pronto quicker, accessible and cheaper than with CT. Since infection with COVID-19 attacks epithelial tissue our metastasis tract, X-ray images is accustomed diagnose respiratory organ pneumonia, lung inflammation, abscesses, Associate in nursing/or swollen bodily fluid nodes. The studies advocate the necessity for a computerised classification for speedy diagnosis. Not only manual interpretations of X-rays is time overwhelming, it also unable to satisfy the perform because of the restricted offer of X-ray radiologists or machine operators [6].

Classification of biomedical images is an emerged area of study to form the care sector additional promising. Amid the aftermath of the epidemic of COVID-19, many recent international studies round the world have adopted subtle ML algorithms and AI based mostly technologies to higher perceive the pattern of infective agent transmission, more improve diagnostic speed and accuracy. Not only that, but it would also support health care staff by reducing their interaction with COVID-19 patients, also. Furthermore, ML/AI-based system help to develop new, successful treatment interventions and theoretically classify the most vulnerable people. ML/AI-based techniques are expected and to improve the accuracy forecast for both infectious and non-infectious disease screening and identification COVID-19 on chest X-ray scans. In the medical sector, AI is not used to eliminate human experiences, but to provide decision-making guidance for physicians in what they model. Figure 1 depicts how AI and ML techniques can be used

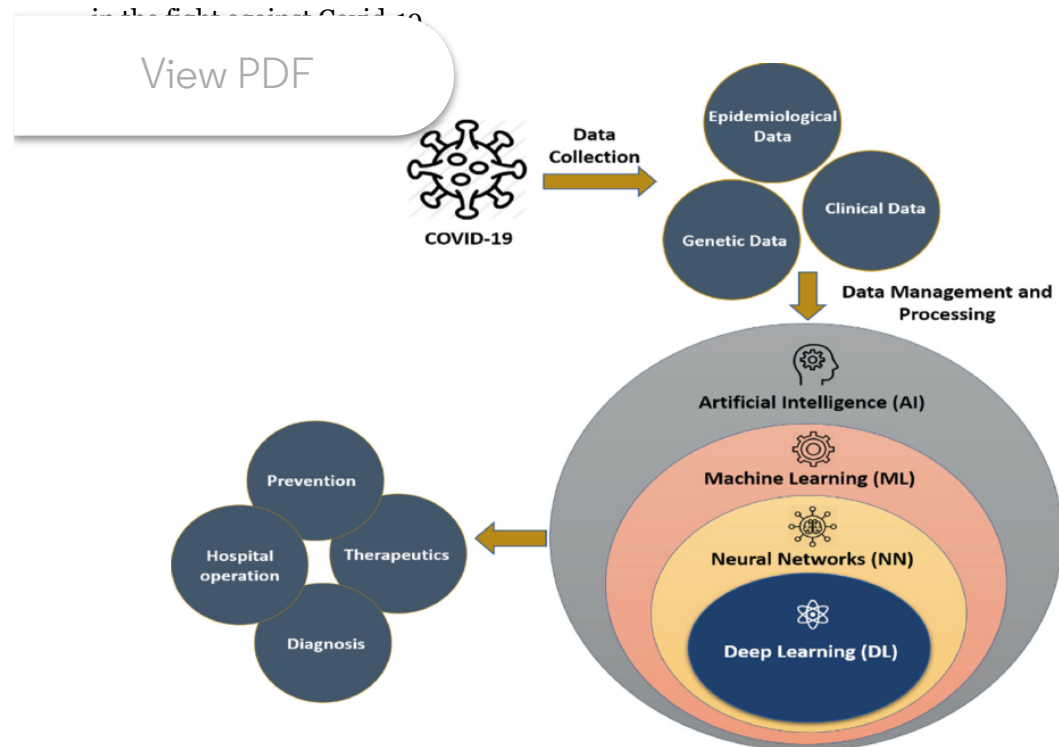


Fig. 1

Schematic illustration of artificial intelligence (AI) and machine learning (ML) techniques applied in the fight against covid-19

The rest of this chapter is structured as follows. Section 2 shall precede the work involved and shall discuss the nature of the work given. Section 3 introduces the suggested solution to the characterization of COVID-19 and its stages using chest x-rays. The experimental findings shall be addressed in Sect. 4. Finally, the conclusion are laid out in Sect. 5.

2 Related Work

At present, in progress tries are created to develop novel diagnostic strategies victimization ML algorithms. During this regard, studies demonstrate the potential of AI and ML tools by proposing new models for speedy and valid SARS-CoV-2 diagnostic methods, such as: Apostolopoulos and Mpesiana [7] in their research, advanced convolutionary neural network structures were used to identify CXR photos. Transfer learning has been introduced to cope with a number of gift anomalies within the dataset. 2 datasets from slightly separate repositories are used to research photographs in two classes: COVID-19 and the traditional state with a ~97% accuracy (sensitivity of 98.66% and specificity of 96.46%). Sathy and Behera [8] proposed a CXR-b intelligent system for COVID-19 identification. Deep aspects of the CXRs have been identified and vector support machine (SVM) classifier was used. The study concluded that ResNet50 combined with SVM achieved best performances (accuracy, F1 score, Matthew's correlation coefficient (MCC) and Kappa were 95.38%, 95.52%, 91.41% and 90.76%, respectively). Another research by Khalifa et al. used generative adversarial networks (GAN) to generate synthetic images of COVID-19 as a respiratory disease from CXRs. They addressed the topic of overfitting by increasing their power by generating additional GAN images. The data generated by GAN images for both natural and nuclear purposes. Well-known deep learning structures (e.g., GoogLeNet, AlexNet, SqueezeNet and ResNet) were used to diagnose pneumonia. Their work highlighted the fact that ResNet18 along with GAN outperformed other deep transport models. Afshar et al. [10] suggested a capsule network called COVID-CAPS instead of a conventional CNN network to communicate with a data set. COVID-CAPS are optimized to obtain an accuracy of 95.7%, sensitivity of 90%, and specificity of 95.8%.

Wang et al. [11] provided a COVID-Net for COVID-19 cases detection from ~14,000 CXRs, with a precision of 83.5%. Abbas et al. [12] rendered a pipeline using the pre-trained modified CNN architecture (DeTraC Decompose, Transfer, and Compose) for COVID-19 detection. They tested their approach on a database of 105 COVID-19, 80 normal subjects and 11 SARS X-rays. The method attained an accuracy of 95.12%, sensitivity of 97.91%, while the specificity was 91.87%.

A systematic study concluded that CXR images throughout the chest can be used for the early diagnosis of COVID-19-infected patients. The literature review also documented the role of modern AI/ML technology to solve the challenges during the outburst. Therefore, statistical models are used in this chapter to distinguish COVID-19 patients from CXR

View PDF

images in the chest; Therefore, the present work proposes a new automated intelligent ML algorithm combined with Neutrosophic techniques (NTs) to detect and classify COVID-19 pneumonia cases using X-ray images. The main objective is to reduce the error in detection while obtaining a more accurate diagnosis. The contributions are summarized as follows:

1. (i)

Building a novel ML model in automatically and efficiently assist in early diagnosis of patients with COVID-19;

2. (ii)

Achieving an empirical analysis of the proposed ML image classifier with NTs in the task of classifying COVID-19 disease using conventional chest X-rays with lower cost than other imaging modalities like CT;

3. (iii)

Comparing our technique with different models to document the robustness and the most accurate results of our method using the available X-rays;

4. (iv)

View PDF

supports multidisciplinary researchers in developing techniques that can help fight the outbreak of COVID-19.

3 The Proposed COVID-19 Diagnostic System

The proposed architecture to accomplish the diagnostic procedure and for detecting the existence of COVID-19 using X-ray images as seen in Fig. 2, consisting of four phases, (i) preprocessing step; (ii) Feature extraction phase; (iii) operation of the NT process; and (iv) classification phase of the ML. These steps are listed in detail in the following paragraphs.

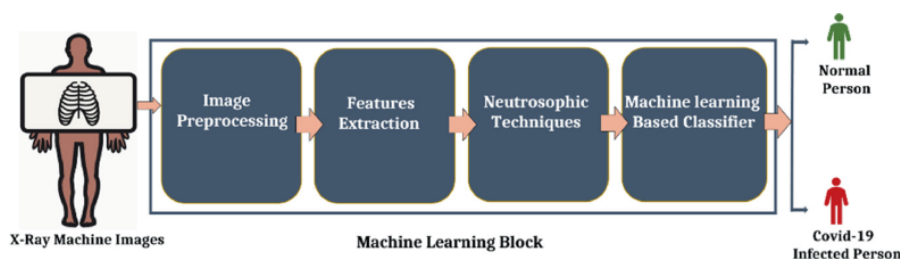
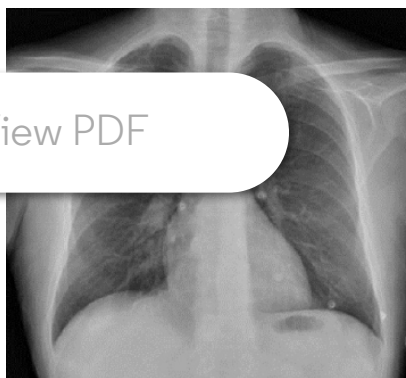


Fig. 2

The proposed block diagram for the COVID-19 classification pipeline

3.1 Pre-processing

The CXR images within the collective knowledge set accommodates uncalled-for objects resembling bright text, icons, differing resolutions, varied shapes, textures and morphological characteristics, usually of various colours, proportions, positioning, component level noise so on, that necessitate its pre-processing. Various pre-processing techniques are employed in this work to supply COVID-19 coaching files. Every image is regenerate as follows: (i) noise extracted to eliminate constituent level noise for many accurate images, so illuminated textual and semantic noise are curbed by a photomask generated using binary thresholds, as indicated by Eq. 1 [13], (ii) turned bound images that aren't utterly set in a very horizontal position. The rotation method was meted out by rotating the pictures in a horizontal direction with the most rotation angle of ± 5 degrees, al-so, (iii) resized the CXR images to a hard and fast resized to a standard dimension, (iv) cropped to isolate the essential a part of the image and to delete certain orthogonal background objects, even to attenuate the commonly-found matter detail within the CXR images, (v) histogram adjustment technique was accustomed improve the distinction of every image, additionally to enhance the lighting conditions and therefore improving the training model. As seen in Fig. 3 as seen within the section on experimental outcomes. The pre-processed images are then divided into the training and testing assortment to evaluate the classification models.



(a)



(b)



(c)



(d)

View PDF

Fig. 3

Operation in data preprocessing: **a** original, **b** resized, **c** cropped, and **d** contrast-enhanced CXR image

$$M(x, y) = \begin{cases} max_{th}, & i(x, y) \geq min_{th} \\ 0, & otherwise. \end{cases}$$

(1)

where $i(x, y)$ represents the input image, max_{th} and min_{th} are maximum and minimum thresholds mask design.

3.2 Feature Extraction

Extraction of options performs any transformation of the initial features by permitting variations and transformations of the original features set to develop new, additional important features to enhance the exactness of learning models by extracting features from input data. This method decreases the spatial property of the info by eliminating the redundant data and, thus, by protective the foremost wonderful elements, improves the speed and training. Extraction of feature is commonly used for describing the creation of the covariance matrix of incessant features with respectable discriminatory power between classes [14]. The salient and efficient features were extracted using nine simple morphic features (MFs) in addition to a collection of main components (PCs) were collected for the chosen X-ray image database, 4, 8, 16 and 24 PCs. PCs were derived from the intensive training collection. Namely, a given each image was interpreted as a row vector and its coefficients were then projected into a set of features; a new re-statement of the COVID-19 detail.

View PDF

Principal Component Analysis (PCA)

Principal component analysis (PCA) may be a second-order applied mathematics approach that turns a group of related factors to lower range of non-correlated factors known as PCs. PCA is primarily accustomed cut back the size of the information set whereas maintaining the maximum amount details as possible rather than all the variance matrix PCs, the data are often expressed in mere a couple of straightforward vectors [15]. Computers were extracted from the complete training kit, where each image was presented as a carrier of a chain. Several characteristics have reduced the coefficients of each image; a new definition of the COVID-19 detail.

2. 2.

Morphological Features (MFs)

Morphological characteristics are derived from the apparent visual characteristics of a given image: (i) area: real number of pixels in the region; (ii) bounding box: represents the smallest measure box that contain all points; (iii) centriod: reflects the intersection of all straight lines separating a given image into two sections of the same moment of the line informally; (iv) convex area: represents a line segment that is completely enclosed within the form of any two points; (v) orientation: represents regions that can be defined as locally 1D (e.g. using lines or edges); and (vi) extreme: represents the largest value (maximum) or the smallest value (minimum) that takes place at a point, either within a neighbourhood or in a on the function domain in its entirety [16].

3.3 Neutrosophic Techniques (NTS)

After extracting the features using MFs and PCA, we employed the Neutrosophic techniques to extract three components: (i) membership degree (or T), (ii) indeterminacy degree (or I) and (iii) non-membership degree (or F). Those three components are correlated with the variables and are of immense importance for our classification algorithm in order to get more accurate and efficient diagnostic result.

Neutrosophic technique (NT) is a technique that would use the Neutrosophic logic rules and the Neutrosophic sets for grouping. Particularly, NT integrates a Neutrosophic rule-based method (e.g., IF X and Y THEN Z) for problem-solving instead of mathematically modeling the underlying system, i.e., NT is equivalent to a fuzzy technique [17]. The

View PDF

Neutrosophic classification inference scheme using fuzzy terminology inference method [18]. The block diagram of the scheme is shown in Fig. 4. The membership functions (T, I, and F) are mutually independent. Thus, using the Matlab fuzzy toolbox, three modules have been constructed: one for each of the Neutrosophic reality variable, Indeterminacy component, and the falsity component. Although independently for each other's components, a connection is drawn among the T, I, and F components to capture the truthfulness, in-determinacy and falseness of the input and the output [19].

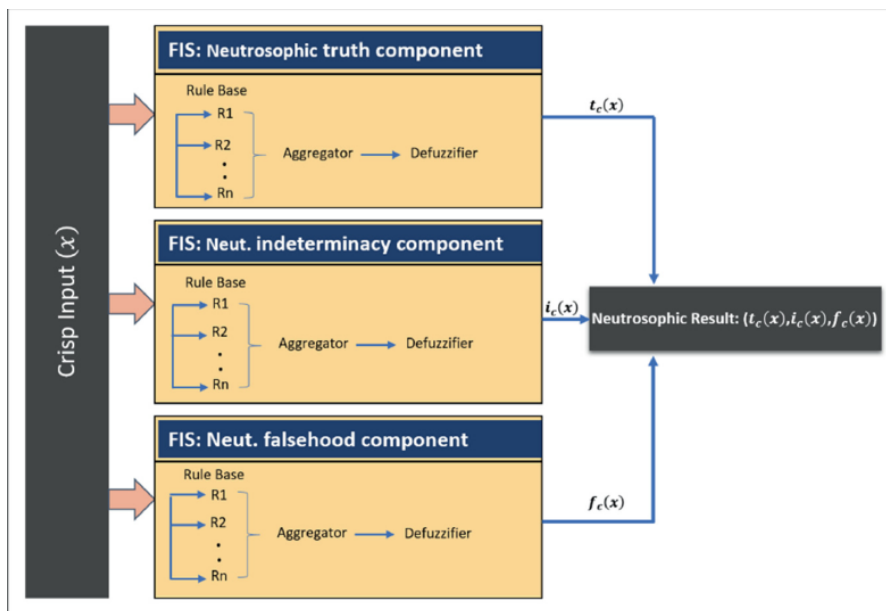


Fig. 4

Block diagram for Neutrosophic components

In Neutrosophic-based classification (i.e., NRCS), rule-based systems using Neutrosophic logic are used to describe various types of information about the underlying topic and for modeling the connections and relationships that occur between its variables [20]. The generic structure of the NRCS is seen in Fig. 5.

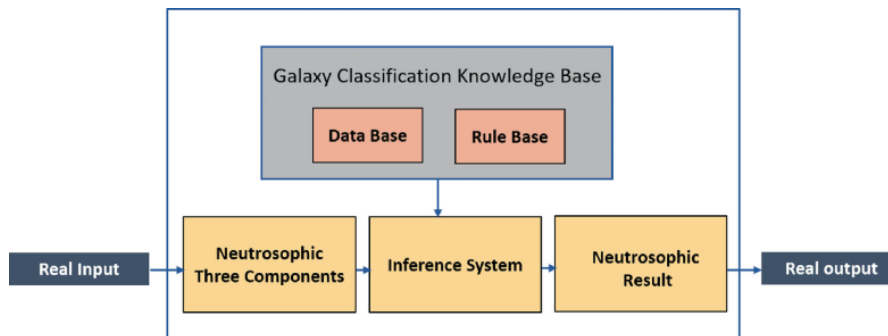


Fig. 5

The basic structure of a Neutrosophic rule-based classifier system

Suppose U represents a discourse world that contains a subset W comprising bright pixels. Neutrosophical pictures are distinguished by three subsets T , I , and F . In the image, the pixel P in the image is defined as $P(T, I, F)$ that relates to W by its $t\%$ is true in the bright pixel, $i\%$ is undetermined, and $f\%$ is false. Here, t , i , and f vary in T , I , and F , respectively. Mathematically, a given pixel $p(x, y)$ in the image domain, is converted to:

$$NDF_{Ns}(x, y) = \{T(x, y), I(x, y), F(x, y)\}$$

(2)

It refers to a white set, it applies to an indeterminate class and refers to a non-white set. Which could be described as [21]:

$$F_{NS}(x, y) = \{T(x, y), I(x, y), F(x, y)\} \quad (3)$$

$$T(x, y) = \frac{g(x, y) - \bar{g}_{min}}{\bar{g}_{max} - \bar{g}_{min}} \quad (4)$$

$$I(x, y) = 1 - \frac{H_o(x, y) - H_o}{H_{o_{max}} - H_{o_{min}}} \quad (5)$$

$$F(x, y) = 1 - T(x, y) \quad (6)$$

$$H_o(x, y) = abs(g(x, y)) - g(x, y) \quad (7)$$

where $g(x, y)$ signifies the local mean value of the window size pixels, and $H_o(x, y)$ that could be distinct as the uniformity value of T at (x, y) represented by the absolute difference between the intensity $g(i, j)$ and the local mean value $g(x, y)$.

3.4 Machine Learning and Classification

Classification is often a part of the Diagnosis (CAD) system and plays a significant role in the medical imaging diagnosis [22]. In the final step of the proposed algorithm; we have used a multilayer perceptron (MLP) based classifier to make a learning process from the extracted features. After extracting the three components (membership, indeterminacy and non-membership) for each MFs and PCs features using NTs, the most robust component of the three components of every MFs and PCs namely membership component were fed to MLP classifier to categorize all the image into one of two cases: positive COVID-19 (+ve) or normal case negative COVID-19 (–ve).

MLP is front-feeding networks of layers that are typically trained on fixed back spread. These networks have made their way into a multitude of applications involving the Classification of set patterns. Its key advantage is that it's simple to use and round every internal/output diagram [23]. The multi-layer neural network consists of the input layer, the output layer, and more than a hidden layer capable of generating more teamwork effects. The key benefit is that it can reflect any logical and continuous function as long as the hidden units are appropriate and an acceptable activation function is used. The method of updating neural weights to accomplish goals is called positional propagation. It attempts in such a manner that it generates the least number of errors. Error is only apparent on the output layer, and this error is returned to the previous layers. The mistake is proportional to the combination of layers on the neural network. Finally, the new weights are revised and replicated again. Since the error size is high in the output layer, the same amount (proportion) of error is propagated back to the previous layer [24].

4 Experimental Results and Discussion

4.1 Data Set Collection

In this chapter, images of chest X-rays were utilized since this reading of radiography is often utilized by radiologists in clinical diagnosis. We tend to use a mix of two separate databases to construct our evaluation set. COVID-19 databases have been collected from in public access and picked up databases, whereas usual, and pneumonia databases have been compiled from publicly out there Kaggle databases:

- **COVID-19 Dataset:** A public database in GitHub have been built [25] by aggregating 319 X-rays of COVID-19, Middle East Respiratory Syndrome (MERS), Extreme Acute metabolism Syndrome (SARS) and respiratory disease from online resources and revealed articles. This database includes 250 positive x-rays of COVID-19 and 25 COVID-19 positive X-rays of lung CT images with a different image resolution. The COVID-19 database was extracted from this database to construct a new database.
- **Normal (or Healthy) Subjects Database:** The Kaggle Chest X-ray info may be an extremely popular database containing 5247 normal, infective agent and microorganism pneumonic x-rays of the chest with preciseness starting from 400p to 2000p [26]. Of the 5247 chest X-rays, 3906 are from separate subjects with pneumonia (2561 footage of bacterial pneumonia and 1345 pictures of virus infection) and 1341 pictures of standard people. In this database, chest x-rays of traditional and viral infection is employed to create an entire new database.

Table 1 shows the number of training and testing images for each type of chest X-ray. Figure 6 shows a sample of images taken from the database of X-ray images of the pulmonary chest COVID-19.

Table 1

Summary of the training and testing data used for the evaluation of the proposed framework

Type	Data set	Training set	Testing set
COVID-19 subjects	250	140	110
Normal subjects	320	170	150

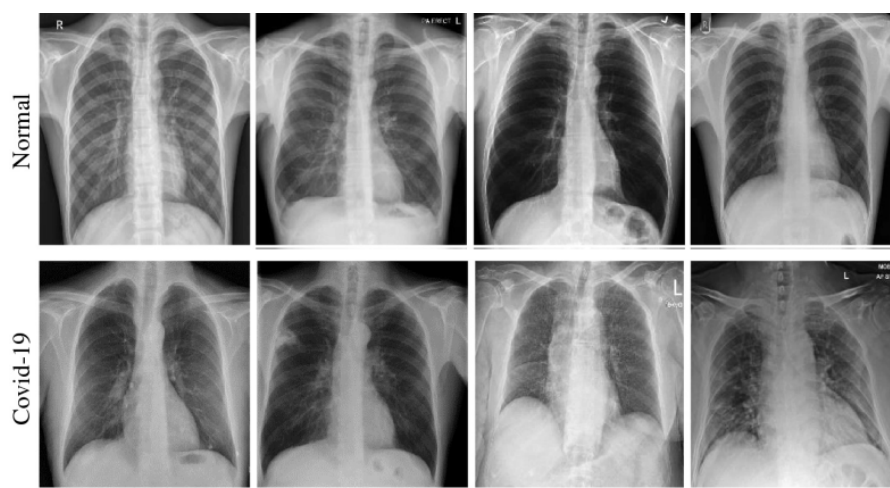


Fig. 6

Samples of chest X-ray images of two different cases: normal healthy person (first row), and patient suffering from covid-19 (second row)

As shown in Fig. 7, X-rays are chest images taken from various patients with positive COVID-19 virus, and experienced radiologists examined the imaging results over a span of 20 years. Radiological findings are classified concerning [27] (i) peripheral predominance; a 72-year-old man complains of fever and cough. Initial chest x-rays revealed a two-terminal opacity in the central and lower oceanic airspace regions (yellow arrows). The degree of severity was 2 per lung, therefore TSS was four (Fig. 7a), (ii) perihilar predominance, and 35-year-old males complained of coughing and fever. Primary chest x-ray revealed opacity to consolidate real oceanic air (yellow arrow). The darkness of the substitute lower-left airspace (long shares) with internal depth was observed; the level of strength was the same for each lung, so TSS was a pair of (Fig. 7b), (iii) or neither; 27-year-old male whiney of cough and fever. Initial chest X-rays revealed minor pulmonary nodules in the center of the right area (yellow arrow) and neither peripheral nor oceanic space consolidation opacity (yellow arrows) was found, and the intensity score was 1 per lung, so TSS 2 (Fig. 7c), (iv) left, left, or binary lung and up; male 23 years without symptoms. Initial chest x-rays revealed an opacity to improve the upper right area (yellow arrow).

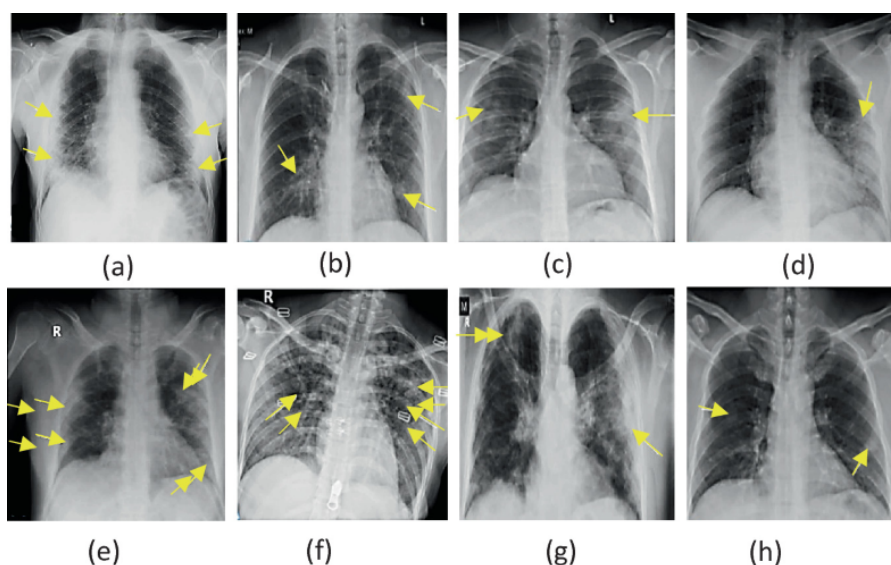


Fig. 7

Examples of chest X-rays for different patients with positive COVID-19

The total severity was one (Fig. 7d), (v) and therefore the lower region; the 32-year male patient was whining of SOB and cough. Initial chest X-rays show the air space's blackout (yellow arrow) within the left and lower respiratory organ areas (with a lower area prevailing). The degree of intensity was 2 for the correct lung and a couple of on the left lung, therefore TSS four (Fig. 7e), (vi) the impact of the lung on monotheism, and the ground glass opacity (GGO); A 29-year-old feminine was affected by coughing and allergies. Initial chest x-rays showed a two-way glass opacity (yellow arrows) with a tiny low opacity within the higher left region (yellow arrow). The density was 2 per lung, so the TSS was 4 (Fig. 7f) (vii) was the reconfigured cellular thickness; the 48-year-old chest X-ray revealed the thickness of the binary biblical lung with opacity was still seen (yellow arrows) (Fig. 7g), (viii) and pulmonary nodules; the 49-year male was complaining of fever. Initial chest X-rays revealed two well-defined small pulmonary nodules in the middle lung region (yellow arrows). The degree of severity was 1 per lung, so TSS was 2 (Fig. 7h), (ix) had pleural or chest rest; the 61-year-old male complained of fever, cough, and diarrhea. Post-chest X-rays revealed a light left pleural effusion with a bilateral opacity to help the lower logical air region (yellow arrows).

4.2 Performance Measures

In order to assess the potency of the planned algorithm, varied strategies are accustomed to determine the afflicted person (+ve) and, therefore, the normal person (-ve) within the X-rays images studied. The cross-checkable was used and resulted in an uncertainty matrix, as seen in Fig. 8. The confusion matrix consists of 4 predicted findings are as follows.

		Actual Value (as confirmed by experiment)	
		Positive	Negative
Predicted Value (predicted by the test)	Positive	True Positive (TP)	False Positive (FP)
	Negative	False Negative (FN)	True Negative (TN)

Fig. 8

Confusion matrix

Four main components are used to generate the confusion matrix True positive (TP); True negative (TN), False positive (FP), and False negatives (FN). TP may be an assortment of abnormalities that are detected with the correct diagnosis. TN is an incorrectly calculated variety of traditional ideals. FP is a set of normal cases referred to as FP for the detection of abnormalities. Finally, FN is a list of anomalies that have been determined as an usual diagnosis. Quality metrics may be determined by measure the values of the doable outcomes within the confusion matrix, Output metrics are often measured. Check trained models are analyzed exploitation common output metrics like precision, accuracy(ACC), recall (selective), specificity, and F1 score (dice coefficient). It shall be represented as follows:

1. 1.

Accuracy

It is a parameter that tests the method's capacity by accurately calculating the proportion of cases predicted from all cases. ACC is mathematically expressed as follows [28]:

$$ACC = \frac{TP + TN}{TP + FP + FN + TN}$$

(8)

where TP (TN) is the correctly predicted positive (negative) cases and FP (FN) is the incorrectly predicted positive (negative) cases. However, exactness isn't invariably smart for evaluating every model type, notably within the case of an associate uneven knowledge set. there's conjointly a requirement to research alternative success metrics to validate the model.

1. 2.

Precision

Precision represents the magnitude relation of well-anticipated positive cases to the general expected positive cases. High accuracy compares to the poor, inaccurate positive rate. It's expressed as [29]:

$$\text{Precision} = \frac{TP}{TP + FP}$$

(9)

1. 3.

Recall (Sensitivity)

This is the magnitude relation of the properly expected positive notes to any or all operations within the actual class i.e. true positive rate. The confusion matrix is employed to assess sensitivity and is mathematically assessed as [30]:

$$\text{Recall (Sensitivity)} = \frac{TP}{TP + FN}$$

(10)

1. 4.

Specificity

It is that the proportion of accurately forecast negative notes on any or more of the real negative observations [31]:

$$\text{Specificity} = \frac{TN}{FP + TN}$$

(11)

1. 5.

F1-Score

The F1-score may be a comprehensive calculation of the accuracy of the model that blends exactness and recollection, the F1-score is double the quantitative relation between the multiplication of accuracy and also the retrieval measurement. Provides a balance between precision and recall [29]:

$$F1 - \text{Score} = \frac{2 \times \text{Precision} \times \text{Recall}}{\text{Precision} + \text{Recall}}$$

(12)

4.3 Results and Discussion

The prompt design has been trained using the following criteria: two hidden layers, and 1000 epochs. The suggested framework has been applied employing a software package kit (MATLAB 2017b). Computer-implementation was for CPU and works during a 64-bit Windows environment. Each tests were conducted on the Intel R processor (2.60 GHz) and 4.00 GB Ram. Five collections of options are arranged: (i) morphological features only; (ii) morphological features of 4 PCs; (iii) Morphological options with eight computers; (iv) morphological features with sixteen computers; and (v) morphological features with twenty four computers. There is no reason to extract extra machines due to the information indicating no clear distinction within the utilization of over 24 PCs. Then, we tend to used NTs techniques together with the MLP classifier. NTs are additional to the three Neutrosophic parts' derived options, i.e. participation, non-identification and in organism, the foremost potent element of the three components per radiofrequency. Therefore, the machine is that the organic component that was fed to the MLP classifier. Figure 9 displays a graph of the Neutrosophic Components (NCs) graph; a sample of all MFs with machine features in the Neutrosophic environment.

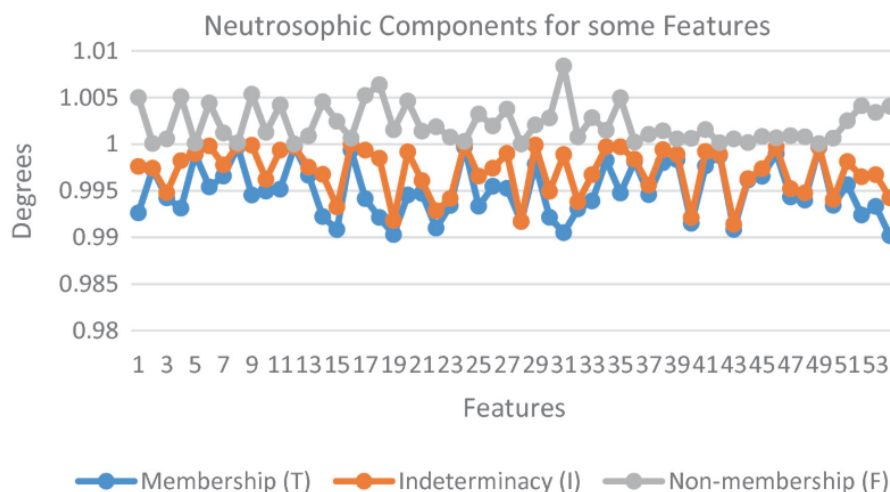


Fig. 9

Neutrosophic three components for some features

The proposed algorithm's performances were measured by employing various performance metrics—confusion matrix, accuracy, precision; sensitivity, specificity, and F1-Score. Figure 10 shows the fusion matrix summary of the proposed algorithm, TP is that true positive within the case of COVID-19, and TN is the true negative in the normal state. In contrast, FP and FN are wrong model estimates for COVID-19 and also the alternative case.

		Actual Covid-19	
		(+ve)	(-ve)
Predicted Covid-19	(+ve)	True Positive 108	False Positive 2
	(-ve)	False Negative 2	True Negative 148

Fig. 10

Confusion matrix analysis of the NCs for (MFs + 4 Pcs)

Although the results are seen in Table 2 and Fig. 11 it's been found that the MLP-based compiler of MFs with options of 24 PCs features the most effective results while not exploiting NTs for all the cases tested for geared up of distinctive features, but once applied NTs to any or all cases tested for all set of features, we tend to found the results showing this using NTs of (MFs with 4PCs) in combination with MLP based classifier provides better result than using the MLP classifier with the other groups of features: ACC = 0.9846; precision = 0.9818; sensitivity = 0.9818, specificity = 0.9867 and F1-Score = 0.9818.

Table 2

Performance of the proposed framework

Performance measures	MFs	MFs + 4 PCs	MFs + 8 PCs	MFs + 16 PCs	MFs + 24 PCs	NT for MFs + 4 PCs
Accuracy	0.9038	0.9462	0.9577	0.9692	0.9731	0.9846
Precision	0.8636	0.9091	0.9364	0.9545	0.9636	0.9818
Sensitivity	0.9048	0.9615	0.9626	0.9722	0.9725	0.9818
Specificity	0.9032	0.9359	0.9542	0.9671	0.9735	0.9867
F1-Score	0.8837	0.9346	0.9493	0.9633	0.9680	0.9818

Note that “MF”, “PC” and “NC” stand for morphological features, principal components, and Neutrosophic technique, respectively

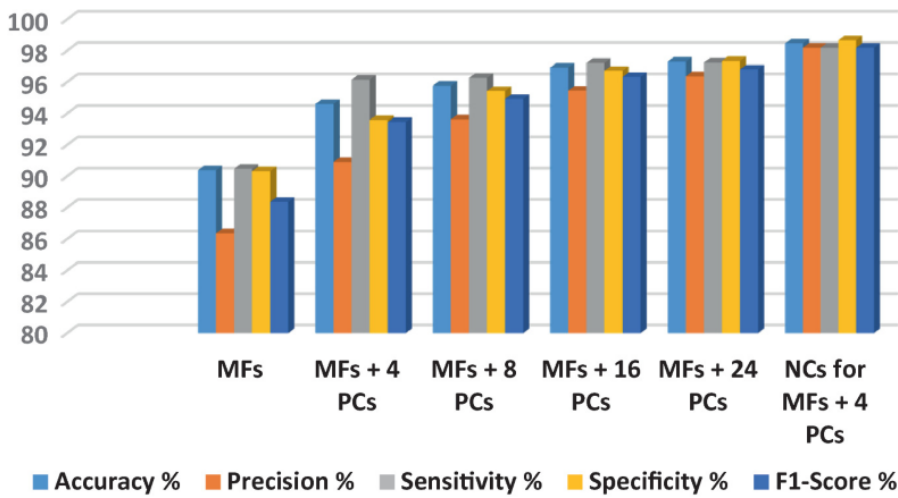


Fig. 11

The performance metrics of the proposed pipeline for COVID-19 diagnosis

This means that the algorithm relies on a small number of tested features for Classification, i.e. only MFs with 4PCs, which saves time and reduces system complexity while achieving higher efficiency in the classification process. This means, that a small set of features is sufficient to classify COVID-19 images using the NTs also there no any need for much more than 4 PCs with using NTs since the results show no noticeable difference.

Table 3 represents a comparison result between the proposed architecture and the other related works which indicate that our approach has worked better for classifying the images of chest X-ray into two classes. Also achieved a high-performance, efficiency, simplicity, and speedy in Classification.

Table 3

The proposed architecture results and the other related works

Performance measures (%)	Accuracy	Precision	Sensitivity	Specificity	F1-Score
Apostolopoulos and Mpesiana [7]	96.78	NA	98.66	96.46	NA
Sethy and Behera [8]	95.38	NA	NA	NA	95.52
Afshar et al. [10]	95.7	NA	90	95.8	NA
Abbas et al. [12]	95.12	NA	97.91	91.87	NA
Proposed	98.46	98.18	98.18	98.67	98.18

5 Conclusion

This paper has proposed a novel, robust, automated, and intelligent system for COVID-19 Classification using chest X-rays. The proposed pipeline is a hybrid technique that integrates machine learning techniques and Neutrosophic techniques. The testing accuracy, precision, sensitivity, specificity, and F1-Score for the scheme were 98.46%, 98.19%, 98.18%, and 98.67%, 98.17%. The obtained results show that using MFs with 4PCs for feature extraction in combination with Neutrosophic techniques and multi-layer perceptron-based classifier provides the best results compared to other ways. This will be significantly helpful during this natural event once the sickness and the want for hindrance action are in distinction with available resources. Our proposed pipeline's weakness is that it only offers a straightforward positive or negative COVID-19 observation to the physician. It will act as a screening aid to a medical imaging specialist. Our future research will be dedicated to providing staging for the severity of COVID-19 cases. This will be achieved by using more possible multi-database algorithms with clinical information for multi-modelling for improved prediction of the disease and deployment of the application in the real world.

References

1. Chowdhury, M.E., Rahman, T., Khandakar, A., Mazhar, R., Kadir, M.A., Mahbub, Z.B., Islam, K.R., Khan, M.S., Iqbal, A., Al-Emadi, N., Reaz, M.B.I.: Can AI help in screening viral and COVID-19 pneumonia? (2020) arXiv preprint [arXiv:2003.13145](https://arxiv.org/abs/2003.13145) (<http://arxiv.org/abs/2003.13145>)
2. Pun, N.S., Agarwal, S.: Automated diagnosis of COVID-19 with limited posteroanterior chest X-ray images using fine-tuned deep neural networks (2020).

arXiv preprint [arXiv:2004.11676](https://arxiv.org/abs/2004.11676) (<http://arxiv.org/abs/2004.11676>)

3. Wang, W., Xu, Y., Gao, R., Lu, R., Han, K., Wu, G., et al.: Detection of SARS-CoV-2 in different types of clinical specimens. *Jama* (2020)
[Google Scholar](https://scholar.google.com/scholar?q=Wang%2C%20W.%2C%20Xu%2C%20Y.%2C%20Gao%2C%20R.%2C%20Lu%2C%20R.%2C%20Han%2C%20K.%2C%20Wu%2C%20G.%2C%20et%20al.%3A%20Detection%20of%20SARS-CoV-2%20in%20different%20types%20of%20clinical%20specimens.%20Jama%20%282020%29) (<https://scholar.google.com/scholar?q=Wang%2C%20W.%2C%20Xu%2C%20Y.%2C%20Gao%2C%20R.%2C%20Lu%2C%20R.%2C%20Han%2C%20K.%2C%20Wu%2C%20G.%2C%20et%20al.%3A%20Detection%20of%20SARS-CoV-2%20in%20different%20types%20of%20clinical%20specimens.%20Jama%20%282020%29>)
4. Yang, T., Wang, Y.-C., Shen, C.-F., Cheng, C.-M.: Point-of-care RNA-based diagnostic device for COVID-19. Multidisciplinary Digital Publishing Institute (2020)
[Google Scholar](https://scholar.google.com/scholar?q=Yang%2C%20T.%2C%20Wang%2C%20Y.-C.%2C%20Shen%2C%20C.-F.%2C%20Cheng%2C%20C.-M.%3A%20Point-of-care%20RNA-based%20diagnostic%20device%20for%20COVID-19.%20Multidisciplinary%20Digital%20Publishing%20Institute%20%282020%29) (<https://scholar.google.com/scholar?q=Yang%2C%20T.%2C%20Wang%2C%20Y.-C.%2C%20Shen%2C%20C.-F.%2C%20Cheng%2C%20C.-M.%3A%20Point-of-care%20RNA-based%20diagnostic%20device%20for%20COVID-19.%20Multidisciplinary%20Digital%20Publishing%20Institute%20%282020%29>)
5. Huang, C., Wang, Y., Li, X., Ren, L., Zhao, J., Hu, Y., et al.: Clinical features of patients infected with 2019 novel coronavirus in Wuhan, China. *Lancet* **395**, 497–506 (2020)
[CrossRef](https://doi.org/10.1016/S0140-6736(20)30183-5) ([https://doi.org/10.1016/S0140-6736\(20\)30183-5](https://doi.org/10.1016/S0140-6736(20)30183-5))
[Google Scholar](http://scholar.google.com/scholar_lookup?title=Clinical%20features%20of%20patients%20infected%20with%202019%20novel%20coronavirus%20in%20Wuhan%2C%20China&author=C.%20Huang&author=Y.%20Wang&author=X.%20Li&author=L.%20Ren&author=J.%20Zhao&author=Y.%20Hu&journal=Lancet&volume=395&pages=497-506&publication_year=2020) (http://scholar.google.com/scholar_lookup?title=Clinical%20features%20of%20patients%20infected%20with%202019%20novel%20coronavirus%20in%20Wuhan%2C%20China&author=C.%20Huang&author=Y.%20Wang&author=X.%20Li&author=L.%20Ren&author=J.%20Zhao&author=Y.%20Hu&journal=Lancet&volume=395&pages=497-506&publication_year=2020)
6. Allen, J.N., Davis, W.B.: Eosinophilic lung diseases. *Am. J. Respir. Crit. Care Med.* **150**(5), 1423–1438 (1994)
[CrossRef](https://doi.org/10.1164/ajrccm.150.5.7952571) (<https://doi.org/10.1164/ajrccm.150.5.7952571>)
[Google Scholar](http://scholar.google.com/scholar_lookup?title=Eosinophilic%20lung%20diseases&author=JN.%20Allen&author=WB.%20Davis&journal=Am.%20J.%20Respir.%20Crit.%20Care%20Med.&volume=150&issue=5&pages=1423-1438&publication_year=1994) (http://scholar.google.com/scholar_lookup?title=Eosinophilic%20lung%20diseases&author=JN.%20Allen&author=WB.%20Davis&journal=Am.%20J.%20Respir.%20Crit.%20Care%20Med.&volume=150&issue=5&pages=1423-1438&publication_year=1994)
7. Apostolopoulos, I.D., Mpesiana, T.A.: Covid-19: automatic detection from x-ray images utilizing transfer learning with convolutional neural networks. *Phys. Eng. Sci. Med.* **1**, 635–640 (2020). <https://doi.org/10.1007/s13246-020-00865-4>
<https://doi.org/10.1007/s13246-020-00865-4>
[CrossRef](https://doi.org/10.1007/s13246-020-00865-4) (<https://doi.org/10.1007/s13246-020-00865-4>)
[Google Scholar](http://scholar.google.com/scholar_lookup?title=Covid-19%3A%20automatic%20detection%20from%20x-ray%20images%20utilizing%20transfer%20learning%20with%20convolutional%20neural%20networks&author=ID.%20Apostolopoulos&author=TA.%20Mpesiana&journal=Phys.%20Eng.%20Sci.%20Med.&volume=1&pages=635-640&publication_year=2020&doi=10.1007%2Fs13246-020-00865-4) (http://scholar.google.com/scholar_lookup?title=Covid-19%3A%20automatic%20detection%20from%20x-ray%20images%20utilizing%20transfer%20learning%20with%20convolutional%20neural%20networks&author=ID.%20Apostolopoulos&author=TA.%20Mpesiana&journal=Phys.%20Eng.%20Sci.%20Med.&volume=1&pages=635-640&publication_year=2020&doi=10.1007%2Fs13246-020-00865-4)
8. Sethy, P.K., Behera, S.K.: Detection of coronavirus disease (covid-19) based on deep features. *Preprints* **2020030300**, 2020 (2020)

Google Scholar (http://scholar.google.com/scholar_lookup?title=Detection%20of%20coronavirus%20disease%20%28covid-19%29%20based%20on%20deep%20features&author=PK.%20Sethy&author=SK.%20Behera&journal=Preprints&volume=2020030300&pages=2020&publication_year=2020)

9. Khalifa, N.E.M., Taha, M.H.N., Hassanien, A.E., Elghamrawy, S.: Detection of coronavirus (covid-19) associated pneumonia based on generative adversarial networks and a fine-tuned deep transfer learning model using chest x-ray dataset (2020). arXiv:2004.01184 (<http://arxiv.org/abs/2004.01184>)
10. Afshar, P., Heidarian, S., Naderkhani, F., Oikonomou, A., Plataniotis, K.N., Mohammadi, A.: Covid-caps: a capsule network-based framework for identification of covid-19 cases from x-ray images (2020). arXiv preprint arXiv:2004.02696 (<http://arxiv.org/abs/2004.02696>)
11. Wang, L., Lin, Z.Q., Wong, A.: Covid-net: a tailored deep convolutional neural network design for detection of covid-19 cases from chest x-ray images. *Sci. Rep.* **10**(1), 1–12 (2020)
CrossRef (<https://doi.org/10.1038/s41598-019-56847-4>)
Google Scholar (http://scholar.google.com/scholar_lookup?title=Covid-net%3A%20a%20tailored%20deep%20convolutional%20neural%20network%20design%20for%20detection%20of%20covid-19%20cases%20from%20chest%20x-ray%20images&author=L.%20Wang&author=ZQ.%20Lin&author=A.%20Wong&journal=Sci.%20Rep.&volume=10&issue=1&pages=1-12&publication_year=2020)
12. Abbas, A., Abdelsamea, M.M., Gaber, M.M.: Classification of COVID-19 in chest X-ray images using DeTraC deep convolutional neural network (2020). arXiv preprint arXiv:2003.13815 (<http://arxiv.org/abs/2003.13815>)
13. OpenCV: Image thresholding (2020).
<https://docs.opencv.org/master/d7/d4d/tutorialpythresholding.html>
(<https://docs.opencv.org/master/d7/d4d/tutorialpythresholding.html>). Online; Accessed 12 April 2020
14. Khalid, S., Khalil, T., Nasreen, S.: A survey of feature selection and feature extraction techniques in machine learning. In: 2014 Science and Information Conference, pp. 372–378. IEEE (2014)
Google Scholar (<https://scholar.google.com/scholar?q=Khalid%2C%20S.%2C%20Khalil%2C%20T.%2C%20Nasreen%2C%20S.%3A%20A%20survey%20of%20feature%20selection%20and%20feature%20extraction%20techniques%20in%20machine%20learning.%20In%3A%202014%20Science%20and%20Information%20Conference%2C%20pp.%20372%E2%80%93378.%20oIEEE%20%282014%29>)
15. Ruck, D., Rogers, S., Kabrisky, M.: Feature selection using a multilayer perceptron. *J. Neural Netw. Comput.* **2**(2), 40–48 (1990)
Google Scholar (http://scholar.google.com/scholar_lookup?title=Feature%20selection%20using%20a%20multilayer%20perceptron&author=D.%20Ruck&author=S.%20Rogers&author=M.%20Kabrisky&journal=J.%20Neural%20Netw.%20Comput.&volume=2&issue=2&pages=40-48&publication_year=1990)

16. Jing, X.J., Yu, N., Shang, Y.: Image filtering based on mathematical morphology and visual perception principle. *Chin. J. Electron.* **13.4**, 612–616 (2004)
[Google Scholar](https://scholar.google.com/scholar?q=Jing%2C%20X.J.%2C%20Yu%2C%20N.%2C%20Shang%2C%20Y.%3A%20Image%20filtering%20based%20on%20mathematical%20morphology%20and%20visual%20perception%20principle.%20Chin.%20J.%20Electron.%2013.4%2C%20612%E2%80%93616%20%282004%29%E2%80%8F) (https://scholar.google.com/scholar?q=Jing%2C%20X.J.%2C%20Yu%2C%20N.%2C%20Shang%2C%20Y.%3A%20Image%20filtering%20based%20on%20mathematical%20morphology%20and%20visual%20perception%20principle.%20Chin.%20J.%20Electron.%2013.4%2C%20612%E2%80%93616%20%282004%29%E2%80%8F)
17. Ansari, A.Q., Biswas, R., Aggarwal, S.: Neutrosophic classifier: an extension of fuzzy classifier. *Appl. Soft Comput.* **13**(1), 563–573 (2013)
[Google Scholar](https://scholar.google.com/scholar?q=Ansari%2C%20A.Q.%2C%20Biswas%2C%20R.%2C%20Aggarwal%2C%20S.%3A%20Neutrosophic%20classifier%3A%20an%20extension%20of%20fuzzy%20classifier.%20Appl.%20Soft%20Comput.%2013%281%29%2C%20563%E2%80%93573%20%282013%29) (https://scholar.google.com/scholar?q=Ansari%2C%20A.Q.%2C%20Biswas%2C%20R.%2C%20Aggarwal%2C%20S.%3A%20Neutrosophic%20classifier%3A%20an%20extension%20of%20fuzzy%20classifier.%20Appl.%20Soft%20Comput.%2013%281%29%2C%20563%E2%80%93573%20%282013%29)
18. Mohammed, M.N., Syamsudin, H., Al-Zubaidi, S., AKS, R.R., Yusuf, E.: Novel COVID-19 detection and diagnosis system using IOT based smart helmet. *Int. J. Psychosoc. Rehabil.* **24**(7), 2296–2303 (2020)
[Google Scholar](https://scholar.google.com/scholar?q=Mohammed%2C%20M.N.%2C%20Syamsudin%2C%20H.%2C%20Al-Zubaidi%2C%20S.%2C%20AKS%2C%20R.R.%2C%20Yusuf%2C%20E.%3A%20Novel%20COVID-19%20detection%20and%20diagnosis%20system%20using%20IOT%20based%20smart%20helmet.%20Int.%20J.%20Psychosoc.%20Rehabil.%2024%287%29%2C%202296%E2%80%932303%20%282020%29) (https://scholar.google.com/scholar?q=Mohammed%2C%20M.N.%2C%20Syamsudin%2C%20H.%2C%20Al-Zubaidi%2C%20S.%2C%20AKS%2C%20R.R.%2C%20Yusuf%2C%20E.%3A%20Novel%20COVID-19%20detection%20and%20diagnosis%20system%20using%20IOT%20based%20smart%20helmet.%20Int.%20J.%20Psychosoc.%20Rehabil.%2024%287%29%2C%202296%E2%80%932303%20%282020%29)
19. Yasser, I., Twakol, A., El-Khalek, A., Samrah, A., Salama, A.A.: COVID-X: novel health-fog framework based on neutrosophic classifier for confrontation covid-19. *Neutrosophic Sets Syst.* **35**(1), 1 (2020)
[Google Scholar](http://scholar.google.com/scholar_lookup?title=COVID-X%3A%20novel%20health-fog%20framework%20based%20on%20neutrosophic%20classifier%20for%20confrontation%20covid-19&author=I.%20Yasser&author=A.%20Twakol&author=A.%20El-Khalek&author=A.%20Samrah&author=AA.%20Salama&journal=Neutrosophic%20Sets%20Syst.&volume=35&issue=1&pages=1&publication_year=2020) (http://scholar.google.com/scholar_lookup?title=COVID-X%3A%20novel%20health-fog%20framework%20based%20on%20neutrosophic%20classifier%20for%20confrontation%20covid-19&author=I.%20Yasser&author=A.%20Twakol&author=A.%20El-Khalek&author=A.%20Samrah&author=AA.%20Salama&journal=Neutrosophic%20Sets%20Syst.&volume=35&issue=1&pages=1&publication_year=2020)
20. Fang, Y., Zhang, H., Xie, J., Lin, M., Ying, L., Pang, P., Ji, W.: Sensitivity of chest CT for COVID-19: comparison to RT-PCR. *Radiology* **200432** (2020)
[Google Scholar](https://scholar.google.com/scholar?q=Fang%2C%20Y.%2C%20Zhang%2C%20H.%2C%20Xie%2C%20J.%2C%20Lin%2C%20M.%2C%20Ying%2C%20L.%2C%20Pang%2C%20P.%2C%20Ji%2C%20W.%3A%20Sensitivity%20of%20chest%20CT%20for%20COVID-19%3A%20comparison%20to%20RT-PCR.%20Radiology%20200432%20%282020%29) (https://scholar.google.com/scholar?q=Fang%2C%20Y.%2C%20Zhang%2C%20H.%2C%20Xie%2C%20J.%2C%20Lin%2C%20M.%2C%20Ying%2C%20L.%2C%20Pang%2C%20P.%2C%20Ji%2C%20W.%3A%20Sensitivity%20of%20chest%20CT%20for%20COVID-19%3A%20comparison%20to%20RT-PCR.%20Radiology%20200432%20%282020%29)
21. Salama, A.A., Smarandache, F., Eisa, M.: Introduction to image processing via neutrosophic techniques. *Neutrosophic Sets Syst.* **5**, 59–64 (2014)
[Google Scholar](http://scholar.google.com/scholar_lookup?title=Introduction%20to%20image%20processing%20via%20neutrosophic%20techniques&author=AA.%20Salama&author=F.%20Smarandache&author=M.%20) (http://scholar.google.com/scholar_lookup?title=Introduction%20to%20image%20processing%20via%20neutrosophic%20techniques&author=AA.%20Salama&author=F.%20Smarandache&author=M.%20)

- Eisa&journal=Neutrosophic%20Sets%20Syst.&volume=5&pages=59-64&publication_year=2014)
22. Dey, N.: Classification Techniques for Medical Image Analysis and Computer Aided Diagnosis. Academic Press (2019)
[Google Scholar](https://scholar.google.com/scholar?q=Dey%2C%20N.%3A%20Classification%20Techniques%20for%20Medical%20Image%20Analysis%20and%20Computer%20Aided%20Diagnosis.%20Academic%20Press%20%282019%29%E2%80%8F) (https://scholar.google.com/scholar?q=Dey%2C%20N.%3A%20Classification%20Techniques%20for%20Medical%20Image%20Analysis%20and%20Computer%20Aided%20Diagnosis.%20Academic%20Press%20%282019%29%E2%80%8F)
 23. Mohammadian, A., Miller, E.J.: Nested logit models and artificial neural networks for predicting household automobile choices: comparison of performance. Transp. Res. Rec. **1807**(1), 92–100 (2002)
[CrossRef](https://doi.org/10.3141/1807-12) (https://doi.org/10.3141/1807-12)
[Google Scholar](http://scholar.google.com/scholar_lookup?title=Nested%20logit%20models%20and%20artificial%20neural%20networks%20for%20predicting%20household%20automobile%20choices%3A%20comparison%20of%20performance&author=A.%20Mohammadian&author=EJ.%20Miller&journal=Transp.%20Res.%20Rec.&volume=1807&issue=1&pages=92-100&publication_year=2002) (http://scholar.google.com/scholar_lookup?title=Nested%20logit%20models%20and%20artificial%20neural%20networks%20for%20predicting%20household%20automobile%20choices%3A%20comparison%20of%20performance&author=A.%20Mohammadian&author=EJ.%20Miller&journal=Transp.%20Res.%20Rec.&volume=1807&issue=1&pages=92-100&publication_year=2002)
 24. Biswas, M., Adlak, R.: Classification of galaxy morphologies using artificial neural network. In: 2018 4th International Conference for Convergence in Technology (I2CT), pp. 1–4. IEEE (2018)
[Google Scholar](https://scholar.google.com/scholar?q=Biswas%2C%20M.%2C%20Adlak%2C%20R.%3A%20Classification%20of%20galaxy%20morphologies%20using%20artificial%20neural%20network.%20In%3A%202018%204th%20International%20Conference%20for%20Convergence%20in%20Technology%20%28I2CT%29%2C%20pp.%201%E2%80%934.%20IEEE%20%282018%29) (https://scholar.google.com/scholar?q=Biswas%2C%20M.%2C%20Adlak%2C%20R.%3A%20Classification%20of%20galaxy%20morphologies%20using%20artificial%20neural%20network.%20In%3A%202018%204th%20International%20Conference%20for%20Convergence%20in%20Technology%20%28I2CT%29%2C%20pp.%201%E2%80%934.%20IEEE%20%282018%29)
 25. Monteral, J.C.: COVID-Chestxray Database (2020). Available: <https://github.com/ieee8023/covid-chestxray-dataset> (https://github.com/ieee8023/covid-chestxray-dataset)
 26. Mooney, P.: Chest X-Ray Images (Pneumonia) (2018). Available: <https://www.kaggle.com/paultimothymooney/chest-xray-pneumonia> (https://www.kaggle.com/paultimothymooney/chest-xray-pneumonia)
 27. Yasin, R., Gouda, W.: Chest X-ray findings monitoring COVID-19 disease course and severity. Egypt. J. Radiol. Nucl. Med. **51**(1), 1–18 (2020)
[CrossRef](https://doi.org/10.1186/s43055-020-00296-x) (https://doi.org/10.1186/s43055-020-00296-x)
[Google Scholar](http://scholar.google.com/scholar_lookup?title=Chest%20X-ray%20findings%20monitoring%20COVID-19%20disease%20course%20and%20severity&author=R.%20Yasin&author=W.%20Gouda&journal=Egypt.%20J.%20Radiol.%20Nucl.%20Med.&volume=51&issue=1&pages=1-18&publication_year=2020) (http://scholar.google.com/scholar_lookup?title=Chest%20X-ray%20findings%20monitoring%20COVID-19%20disease%20course%20and%20severity&author=R.%20Yasin&author=W.%20Gouda&journal=Egypt.%20J.%20Radiol.%20Nucl.%20Med.&volume=51&issue=1&pages=1-18&publication_year=2020)
 28. Jain, G., Mittal, D., Thakur, D., Mittal, M.K.: A deep learning approach to detect covid-19 coronavirus with X-Ray images. Biocybernetics Biomed. Eng. **40**(4), 1391–1405 (2020)
[CrossRef](https://doi.org/10.1016/j.bbe.2020.08.008) (https://doi.org/10.1016/j.bbe.2020.08.008)
[Google Scholar](http://scholar.google.com/scholar_lookup?title=A%20deep%20learning%20approach%20to%20detect%20covid-) (http://scholar.google.com/scholar_lookup?title=A%20deep%20learning%20approach%20to%20detect%20covid-

19%20coronavirus%20with%20X-

Ray%20images&author=G.%20Jain&author=D.%20Mittal&author=D.%20Thakur&author=MK.%20Mittal&journal=Biocybernetics%20Biomed.%20Eng.&volume=40&issue=4&pages=1391-1405&publication_year=2020)

29. Hemdan, E.E.-D., Shouman, M.A., Karar, M.E.: Covidx-net: a framework of deep learning classifiers to diagnose covid-19 in x-ray images (2020). arXiv preprint [arXiv:2003.11055](https://arxiv.org/abs/2003.11055) (<http://arxiv.org/abs/2003.11055>)
30. Pannu, H.S., Singh, D., Malhi, A.K.: Improved particle swarm optimization based adaptive neuro-fuzzy inference system for benzene detection. CLEAN–Soil Air Water **46**(5), 1700162 (2018)
[Google Scholar](https://scholar.google.com/scholar?q=Pannu%2C%20H.S.%2C%20Singh%2C%20D.%2C%20Malhi%2C%20A.K.%3A%20Improved%20particle%20swarm%20optimization%20based%20adaptive%20neuro-fuzzy%20inference%20system%20for%20benzene%20detection.%20CLEAN%E2%80%93Soil%20Air%20Water%2046%285%29%2C%201700162%20%282018%29) (<https://scholar.google.com/scholar?q=Pannu%2C%20H.S.%2C%20Singh%2C%20D.%2C%20Malhi%2C%20A.K.%3A%20Improved%20particle%20swarm%20optimization%20based%20adaptive%20neuro-fuzzy%20inference%20system%20for%20benzene%20detection.%20CLEAN%E2%80%93Soil%20Air%20Water%2046%285%29%2C%201700162%20%282018%29>)
31. Kaur, M., Gianey, H.K., Singh, D., Sabharwal, M.: Multiobjective differential evolution based random forest for e-health applications. Mod. Phys. Lett. B **33**(05), 1950022 (2019)
[CrossRef](https://doi.org/10.1142/S0217984919500222) (<https://doi.org/10.1142/S0217984919500222>)
[Google Scholar](http://scholar.google.com/scholar_lookup?title=Multiobjective%20differential%20evolution%20based%20random%20forest%20for%20e-health%20applications&author=M.%20Kaur&author=HK.%20Gianey&author=D.%20Singh&author=M.%20Sabharwal&journal=Mod.%20Phys.%20Lett.%20B&volume=33&issue=05&pages=1950022&publication_year=2019) (http://scholar.google.com/scholar_lookup?title=Multiobjective%20differential%20evolution%20based%20random%20forest%20for%20e-health%20applications&author=M.%20Kaur&author=HK.%20Gianey&author=D.%20Singh&author=M.%20Sabharwal&journal=Mod.%20Phys.%20Lett.%20B&volume=33&issue=05&pages=1950022&publication_year=2019)

Copyright information

© The Author(s), under exclusive license to Springer Nature Switzerland AG 2022

About this chapter

Cite this chapter as:

Yasser I., Abd El-Khalek A.A., Twakol A., Abo-Elhoud ME., Salama A.A., Khalifa F. (2022) A Hybrid Automated Intelligent COVID-19 Classification System Based on Neutrosophic Logic and Machine Learning Techniques Using Chest X-Ray Images. In: Hassanien AE., Elghamrawy S.M., Zelinka I. (eds) Advances in Data Science and Intelligent Data Communication Technologies for COVID-19. Studies in Systems, Decision and Control, vol 378. Springer, Cham. https://doi.org/10.1007/978-3-030-77302-1_7

- First Online 24 July 2021
- DOI https://doi.org/10.1007/978-3-030-77302-1_7
- Publisher Name Springer, Cham
- Print ISBN 978-3-030-77301-4
- Online ISBN 978-3-030-77302-1
- eBook Packages [Intelligent Technologies and Robotics](#) [Intelligent Technologies and Robotics \(Ro\)](#).

- [Buy this book on publisher's site](#)
- [Reprints and Permissions](#)

Personalised recommendations

SPRINGER NATURE

© 2020 Springer Nature Switzerland AG. Part of [Springer Nature](#).

Not logged in Egyptian Knowledge Bank (3000142857) - Specialized Presidential Council for Educ and Scientific Research Portal (3002076174) 102.185.59.40